

TTMA-100

Trailer Truck Mounted Attenuator

INNOVATIVE - FLEXIBLE - AFFORDABLE

TTMA-100 shown with optional paint and arrow board



SAFETY TRAILER'S innovative, flexible and affordable trailer truck mounted attenuator (TMA), **TTMA-100**, is the first approved hitch-mounted TL-3 TMA that can be used with almost any vehicle in your fleet from 10,000 lbs to unlimited GVW. Utilizing a standard 8-ton pintle hitch, the 1,450-lb TTMA-100 can be attached to the towing vehicle in a few minutes with absolutely no modification. The TTMA-100 offers the most affordable and flexible TMA safety on the market today.

FEATURES & BENEFITS

- Patented tube bursting technology utilizes the trailer frame as the energy absorber thus *simplifying* the design and *reducing* cost.
- Meets all *required* and *optional* NCHRP 350 Test Level 3 (TL-3) test criteria with the support vehicle blocked to eliminate all forward movement (worse case scenario).
- Provides continuous protection at *all* times and speeds; no need to raise TMA to vertical position for transport; no overhead clearance issues.
- Can be used with *any* support vehicle of 10,000-lb GVW or more equipped with a standard 8-ton pintle hook.
- No maximum support vehicle weight limit.

- No need for dedicated support vehicle; change support vehicle in a matter of minutes.
- Fully galvanized for long-term moisture and corrosion protection; built to last.
- Can be attached directly to snow-plowing, and some sanding and salting equipment.
- Can be equipped with arrow board or variable message sign panels (optional).
- Field replacement components for low-cost in-field repair after nuisance hits.
- Tongue weight of only 200 lbs. does not significantly reduce the load carrying capacity of the support vehicle.
- Operates like any trailer and does not change the operating characteristics of the support vehicle.

SPECIFICATIONS

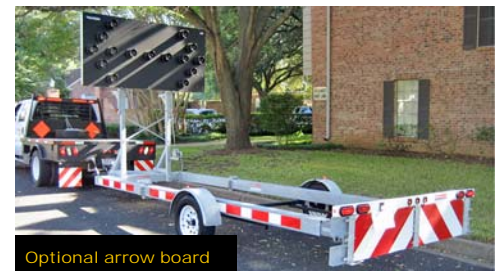
- W 96 in. x H 31 in. x L 23 ft.-6 in.
- 1,450 lbs. (200 lb. tongue weight)
- 1,750 lbs. with arrow board
- (400 lb. tongue weight)
- 8-ton pintle hook - height 19.5 in. to 32 in.
- Hot-dip galvanized
- NCHRP 350 TL-3 compliant (passed all required and optional tests)



Can be purchased without arrow-



Shown attached to snow



Optional arrow board

STI Safety Trailers Inc.

(210) 464-3465

FAX (210) 698-0556

www.safetytrailers.com

TTMA-100

Trailer Truck Mounted Attenuator

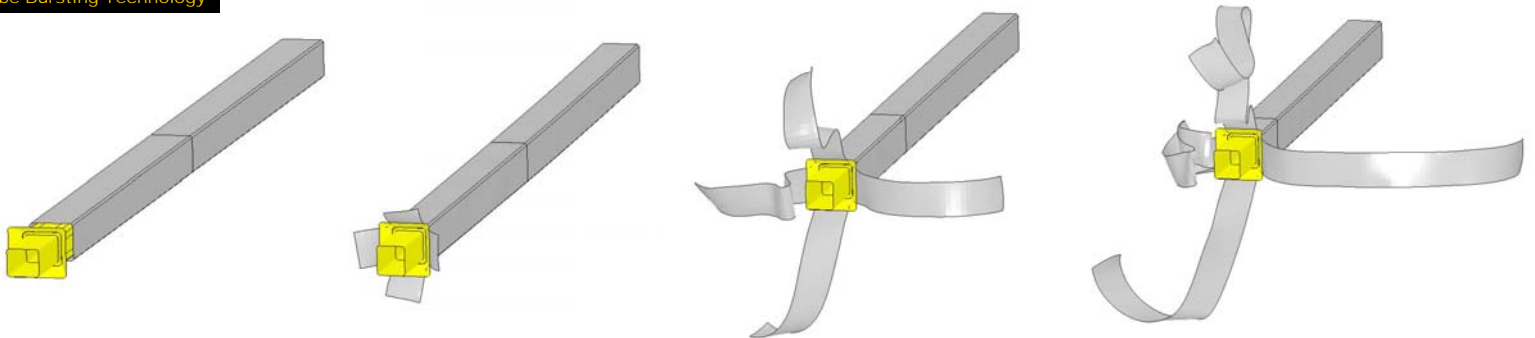
TECHNICAL HIGHLIGHTS

NCHRP 350 Approved

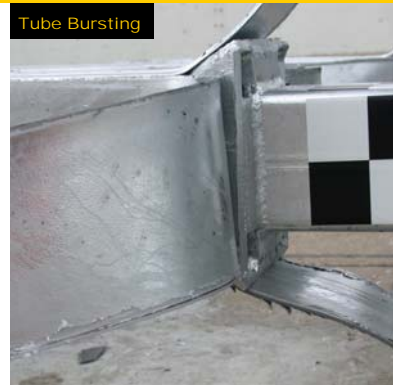


NCHRP 350 TL-3 compliant. Successfully passed all NCHRP 350 required and optional crash tests with the support vehicle blocked against all forward movement (worst case scenario) for test level 3 (TL-3) conditions at an impact speed of 62 mph. Photo shows result of small car head-on test. Note the relatively minor damage to the vehicle and lack of loose debris.

Tube Bursting Technology



Over-sized Mandrels



Tube Bursting



Tube Bursting

Patented tube bursting technology. As illustrated in the graphics above, an over-sized mandrel is pushed into the smaller tube and splits the tube into four straps of metal while dissipating the impact energy. The metal straps remain with the trailer and do not pose any hazard to adjacent traffic. This allows the trailer frame to also serve as the energy absorber, simplifying the design and reducing cost.



8-ton Pintle Hitch



Quick Connection



Quick Connection

Flexibility. Quick attachment to any support vehicle with GVW of 10,000 lbs or more (no maximum weight limit). Only a standard 8-ton pintle hitch is needed for towing with no vehicle modifications. No need for dedicated support vehicle. Low tongue weight does not significantly reduce load-carrying capacity of support vehicle.